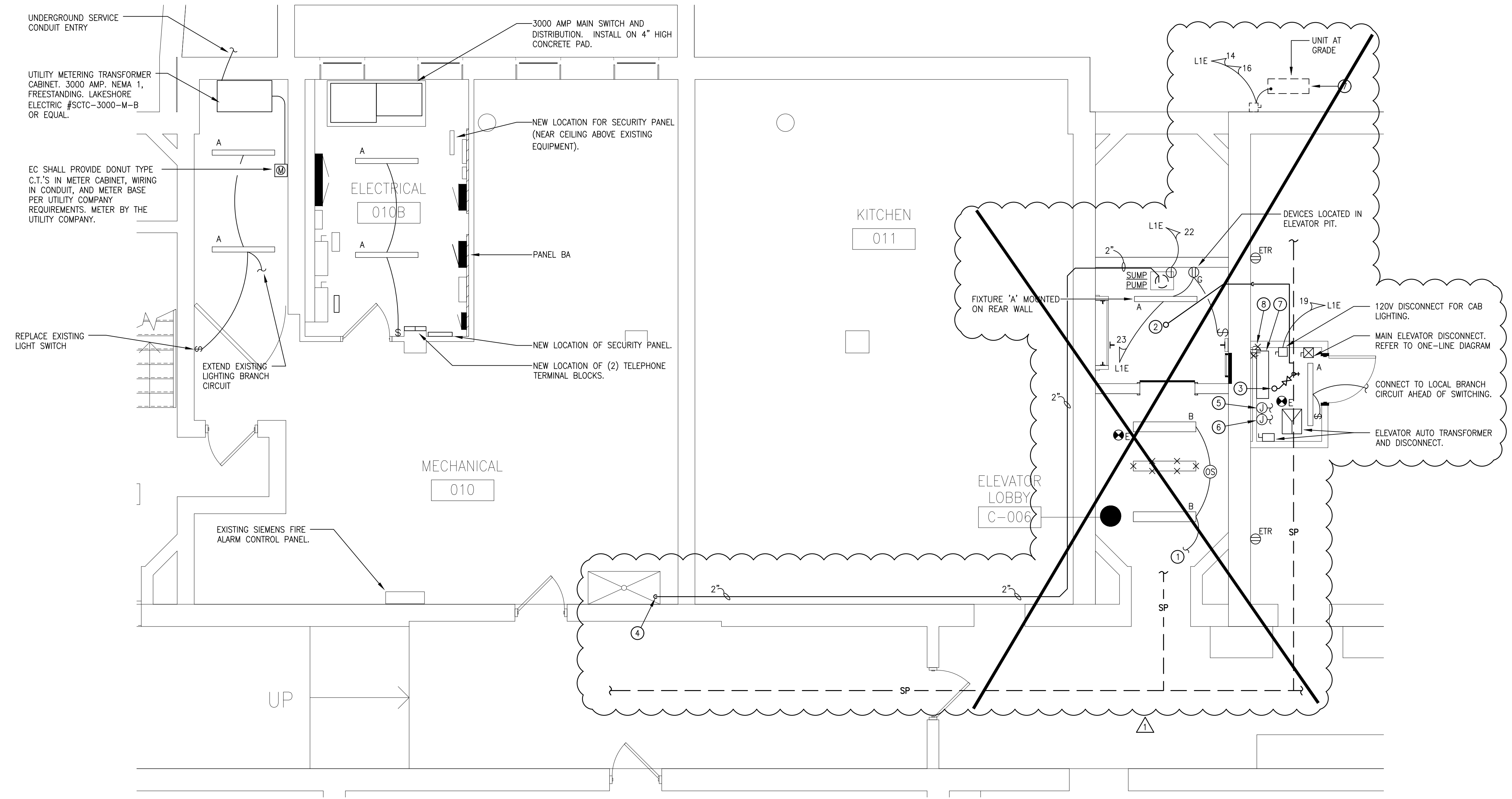


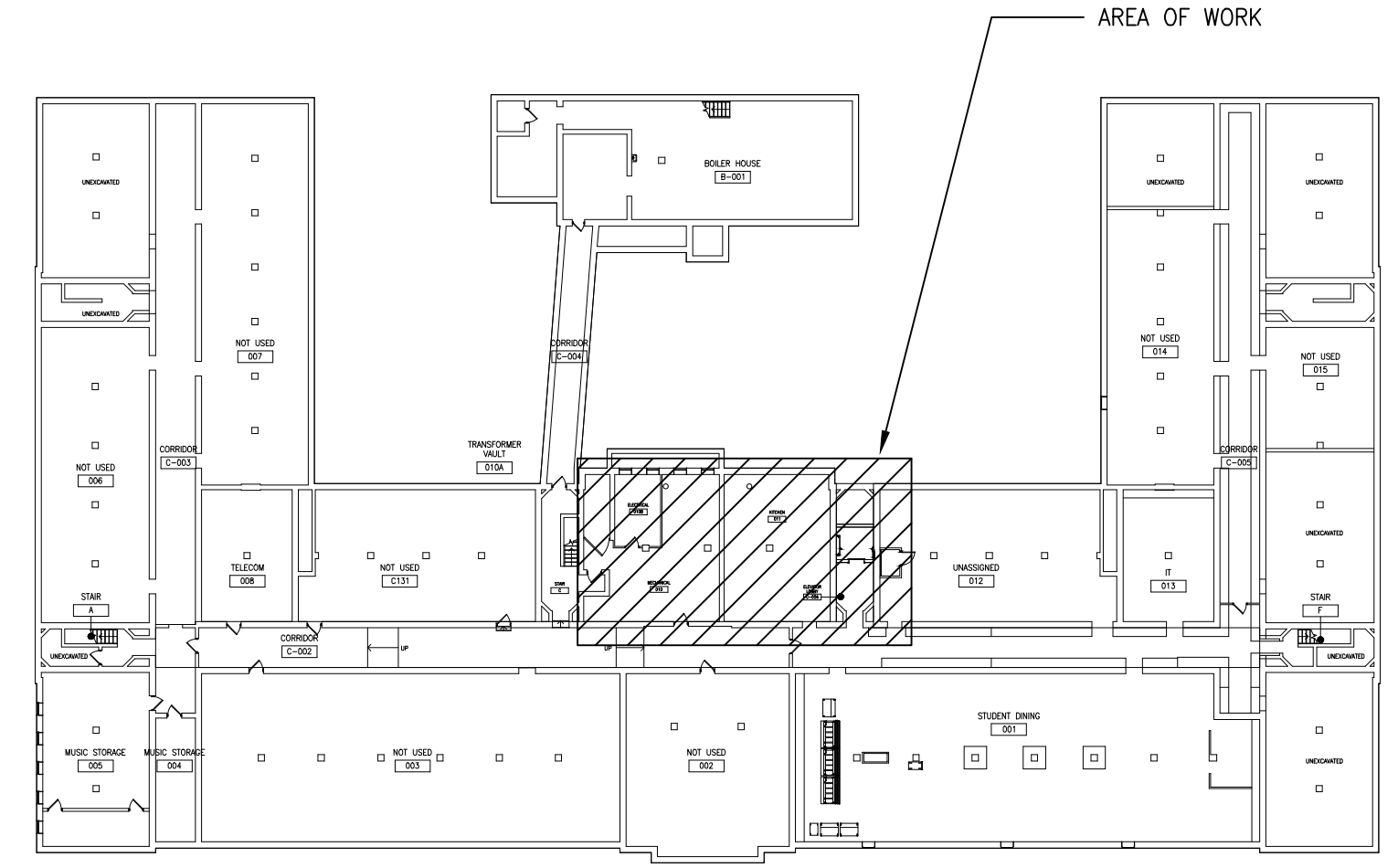
**1 PARTIAL ELECTRICAL ROOM DEMOLITION PLAN**  
APPENDUM #1 - 1/4" = 1'-0" SCALE

- PARTIAL ELECTRICAL ROOM DEMOLITION PLAN CODED NOTES:**
- ① REMOVE EXISTING 240V-3Ø-200A DISCONNECT COMPLETE WITH SERVICE CONDUCTORS FED FROM TRANSFORMER VAULT.
  - ② REMOVE EXISTING 240V-3Ø METER. FIRST ENERGY #B74 045 766
  - ③ EXISTING 3Ø MAIN PANEL/JUNCTION BOX SHALL BE ABANDONED IN PLACE. REMOVE PANEL INTERIOR AND ABANDON PANEL TUB, AND COVERS IN PLACE. (5) ACTIVE CIRCUITS SHALL BE INTERCEPTED AND EXTENDED TO MDP. REFER CODED PLAN NOTES.
  - ④ REMOVE EXISTING 240V-3Ø-200A FUSED DISCONNECT, MOUNTED HIGH ON WALL. REMOVE SWITCH AND CONDUCTORS BACK TO 3Ø MAIN PANEL (ASSUMED TAPPED FROM PANEL BUS TO INTERCEPT AND EXTEND FEEDER TO MDP. REFER TO CODED PLAN NOTES. SWITCH SERVES 3Ø KITCHEN PANEL.
  - ⑤ EXISTING (2) 1Ø METERS TO BE REMOVED COMPLETE WITH WIRING BACK TO TRANSFORMER VAULT.
  - ⑥ REMOVE EXISTING 600A-1Ø SERVICE FROM SERVICE ENTRANCE DISCONNECT TO TRANSFORMERS IN THE VAULT.
  - ⑦ REMOVE FUSE PANEL COMPLETE. INTERCEPT AND EXTEND CIRCUIT TO PANEL BA.
  - ⑧ REMOVE EXISTING LIGHTING. SEE ELECTRICAL PLAN FOR NEW REQUIREMENTS.

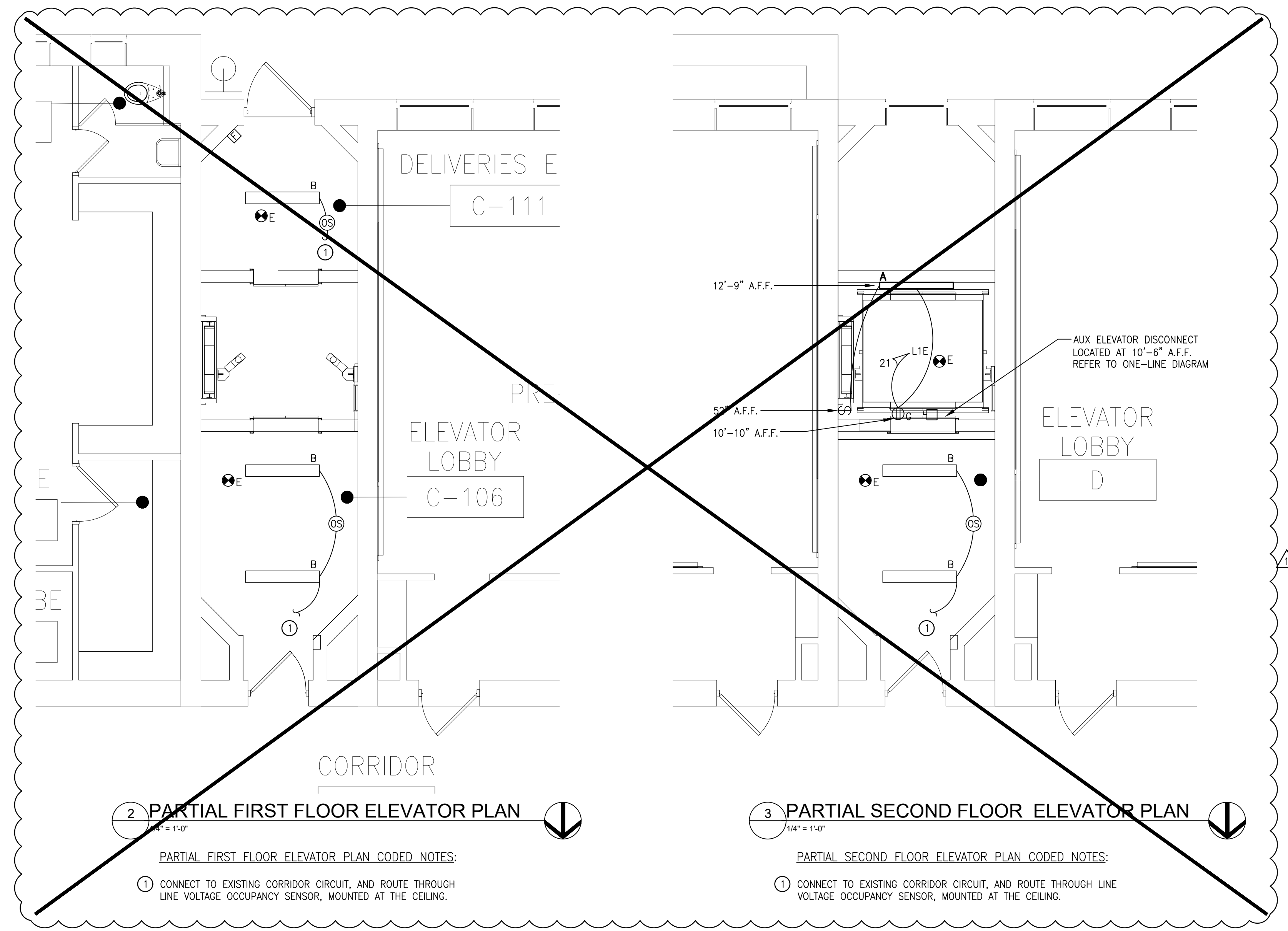


**1 PARTIAL BASEMENT ELEVATOR PLAN**  
1/4" = 1'-0"

- PARTIAL BASEMENT ELEVATOR PLAN CODED NOTES:**
- ① CONNECT TO EXISTING CORRIDOR CIRCUIT, AND ROUTE THROUGH LINE VOLTAGE OCCUPANCY SENSOR, MOUNTED AT THE CEILING.
  - ② NEW SPRINKLER HEAD IN ELEVATOR PIT.
  - ③ NEW SPRINKLER HEAD IN NEW ELEVATOR MACHINE ROOM. INCLUDE SHUTOFF VALVE ON BRANCH LINE - TAMPER SWITCH IS NOT REQUIRED.
  - ④ 2" SUMP OUTLET DOWN TO INDIRECT DRAIN IN MOP SINK.
  - ⑤ FIRE ALARM WIRING FOR BECAL FUNCTION IN CONDUIT.
  - ⑥ TELEPHONE WIRING FOR CAR INTERCOM IN CONDUIT.
  - ⑦ WALL-MOUNTED HEAT PUMP SYSTEM. OUTDOOR UNIT (MUZ-FH06NAH) 2.3KW, 208V-1Ø. WIRE WITH 2#12, 1#14S, 3/4" C. TO CIRCUIT BREAKER INDICATED. PROVIDE 15A/2P, WEATHERPROOF DISCONNECT. PROVIDE 208V 1Ø CONNECTION, PER MANUFACTURERS WIRING DIAGRAM TO INDOOR UNIT (MS2-FH06BA).
  - ⑧ REMOVE RECEPTACLE IN CONFLICT WITH NEW WALL.
- GENERAL LIGHTING NOTES:**
- 1. FIXTURE A: 4" LED TROP fixture with clear lens, 3000 LUMEN OUTPUT, 3500K, 120V OPERATION. EATON MODEL: #4SNLED-LH1-3050-1-UNV-L835-CD1
  - 2. FIXTURE B: 4" LED WRAP AROUND fixture with frosted acrylic lens, 3200 LUMEN OUTPUT AND SURFACE MOUNTED, 120V OPERATION, 3200K. EATON MODEL: #4WNLED-LD4-32SL-F-UNV-L835-CD1
- ELECTRICAL SWITCHGEAR:**
- 1. EC SHALL VISIT SITE PRIOR TO FINALIZING BID, AND DETERMINE METHOD FOR DELIVERING SWITCHGEAR INTO THE BASEMENT LEVEL ELECTRICAL ROOM.



**0 KEY PLAN**  
APPENDUM #2



**2 PARTIAL FIRST FLOOR ELEVATOR PLAN**  
1/4" = 1'-0"

- PARTIAL FIRST FLOOR ELEVATOR PLAN CODED NOTES:**
- ① CONNECT TO EXISTING CORRIDOR CIRCUIT, AND ROUTE THROUGH LINE VOLTAGE OCCUPANCY SENSOR, MOUNTED AT THE CEILING.

**3 PARTIAL SECOND FLOOR ELEVATOR PLAN**  
1/4" = 1'-0"

- PARTIAL SECOND FLOOR ELEVATOR PLAN CODED NOTES:**
- ① CONNECT TO EXISTING CORRIDOR CIRCUIT, AND ROUTE THROUGH LINE VOLTAGE OCCUPANCY SENSOR, MOUNTED AT THE CEILING.

**BENJAMIN FRANKLIN**  
PreK-8 SCHOOL  
ELEVATOR  
INFRASTRUCTURE  
1905 Spring Road  
Cleveland, Ohio 44109

ISSUE DATE	PROJECT STATUS
06.13.2018	BID/PERMIT
08.02.2018	ADDENDUM #1

REVISION SCHEDULE	
DATE	DESCRIPTION

SHEET NAME:  
MECHANICAL AND ELECTRICAL ELEVATOR PLAN

SEAL:  
STATE OF OHIO  
MICHAEL DENK  
PROFESSIONAL ENGINEER  
No. 56369

1665 PROJECT NO.  
06.13.2018 DATE  
ME1.0 DRAWING NO.  
DRAWN BY: MSA CHECKED BY: MTD  
06/13/2018